

# FS-RNG1-01

## POLARIS RANGER 900/1000 - SUB-FRAME SUPPORT KIT



**HIGHLIFTER**

**SEIZMIK™**

**FALCON RIDGE**

**SNORKEL**  
YOUR ATV

**SYSTEM 3**  
OFF-ROAD  
Traction. Strength. Style.

**EPI**  
PERFORMANCE

✉ sales@highlifter.com  
☎ 800-699-0947 | 8:00am - 5:00pm CST  
📍 7455 Atkinson Drive, Shreveport, LA 71129



www.highlifter.com

Parts Available For These Popular Brands and Others

**POLARIS**

**can-am**



**HONDA**

**Kawasaki**

**YAMAHA**

### **READ BEFORE INSTALLATION**

By purchasing and installing High Lifter products, user agrees that should damages occur, High Lifter will not be held responsible for loss of time, use, labor fees, replacement parts, or freight charges. High Lifter will not be held responsible for any direct, indirect, incidental, special, or consequential damages that result from any product purchased from High Lifter. The total liability of seller to user for all damages, losses, & causes of action, shall not exceed the total purchase price paid for the product that gives rise to the claim.

### **DEALERS AND INSTALLERS**

You are responsible for informing your customer and end user of the information contained above and the increased potential hazards of operating a side-by-side equipped with this component. All owners need to be informed that it is their responsibility to notify anyone operating the vehicle, as well as any passengers, that said vehicle is modified.

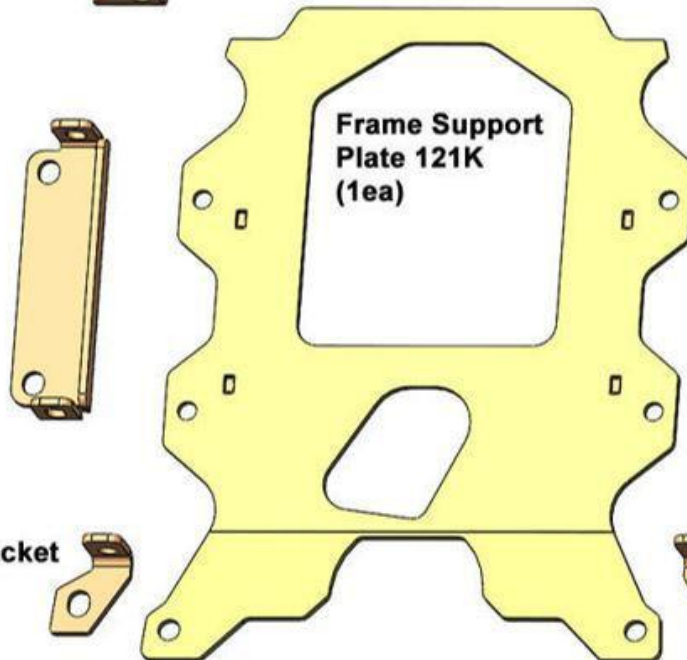
---

### **PARTS DIAGRAM**

**Front Left Bracket  
117M-L (1ea)**



**Front Right Bracket  
117M-R (1ea)**



**Frame Support  
Plate 121K  
(1ea)**

**Middle Tab  
Support Bracket  
117L (2ea)**

**These work on  
either side.**

**Rear Left Bracket  
117N-L (1ea)**



**Rear Right Bracket  
117N-R (1ea)**



**10mmx110mm Hex Screw  
MCS10X110-10.9 (4EA)**



**MCS10X35-10.9  
10MM X 35MM (8EA)**



**10mm Lock Nut  
(12EA) MLN10-1.5**



**10mm Flat Washer  
MFW10  
(24EA)**

## Installation Instructions:

(PASSENGER SIDE)

1. For safety make sure that the Ranger is supported with jack stands or a jack before working under the unit and before removing the lower control arm bolts.
2. There is a two-stage process for installing this kit. First you need to install all the brackets that will be located on the top side of the lower frame. The second stage will be connecting the frame support plate to the bottom of the frame.
3. In the first stage you need to remove the bolts that connect the lower control arms to the frame.



4. If you have a bumper, remove the two bolts that connect the lower portion of the bumper to the frame. These are located near the lower control arms.

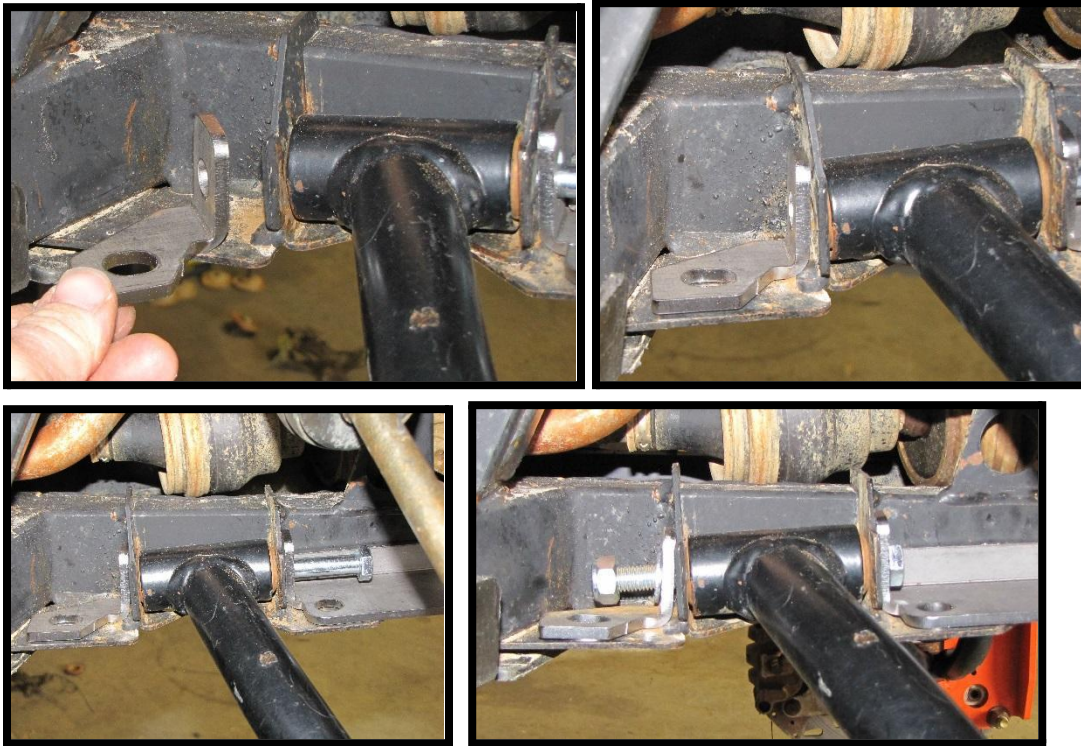


5. Once you have removed the bolts it is time to connect the frame plate brackets. There are left and right brackets. For orientation, left and right is determined from the seated position. Images used in for instructions are from the right side.
6. Insert the center brackets between the front and rear lower control arm frame tabs. Insert this bracket from the top down. If you try to insert from the side, it will be difficult. Top down is best.
7. Over time frame tabs can get bent or stretched. You may have to tap brackets into place.





8. Next connect the left and right rear bracket to the control arm tabs. Place a 10mm flat washer on the 10mm x 110mm bolt. Insert the bolt through the brackets and control arm collar. Loosely secure the bolt and brackets with a 10mm washer and 10mm lock nut.

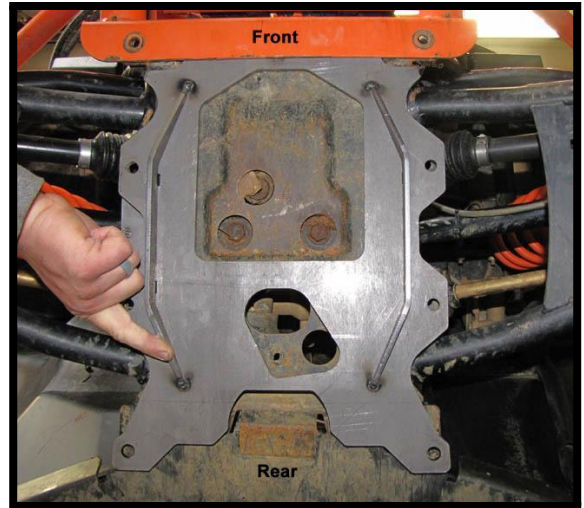


9. Next connect the front left and right bracket to the control arm tabs. Place a 10mm flat washer on the 10mm x 110mm bolt. Insert the bolt through the brackets and control arm collar. Loosely secure the bolt and brackets with a 10mm washer and 10mm lock nut.

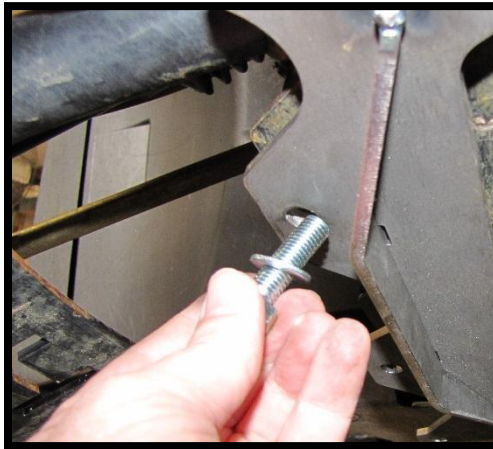


10. For the second stage, connect the frame support plate to the under carriage of the UTV. The rib side of the plate faces outward, the flat side faces the frame.

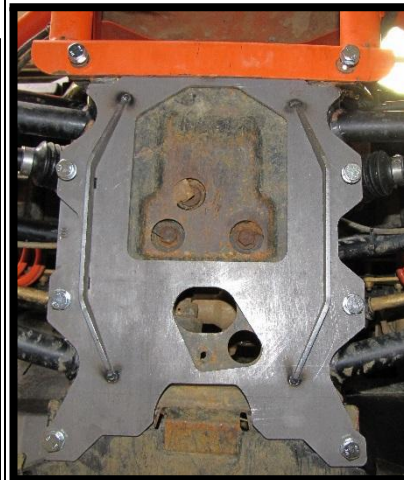
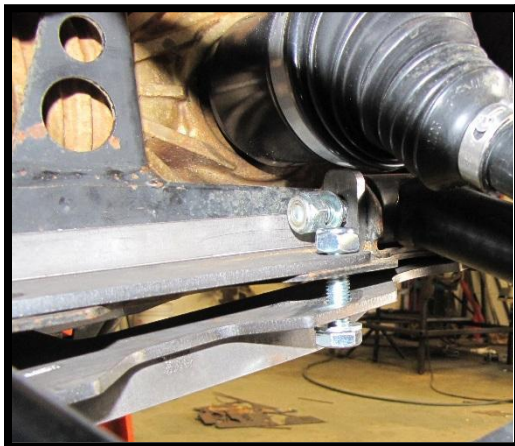




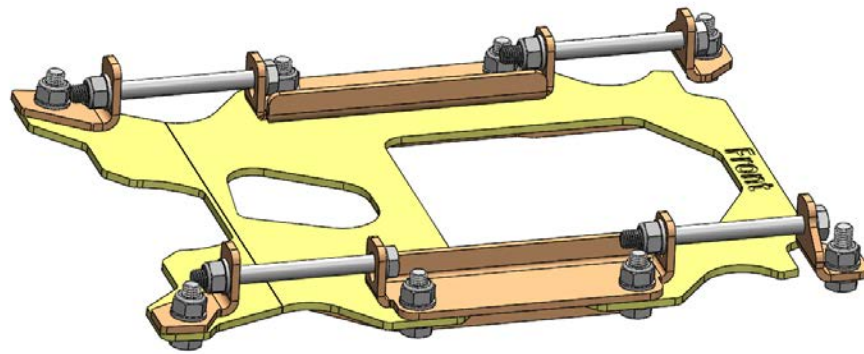
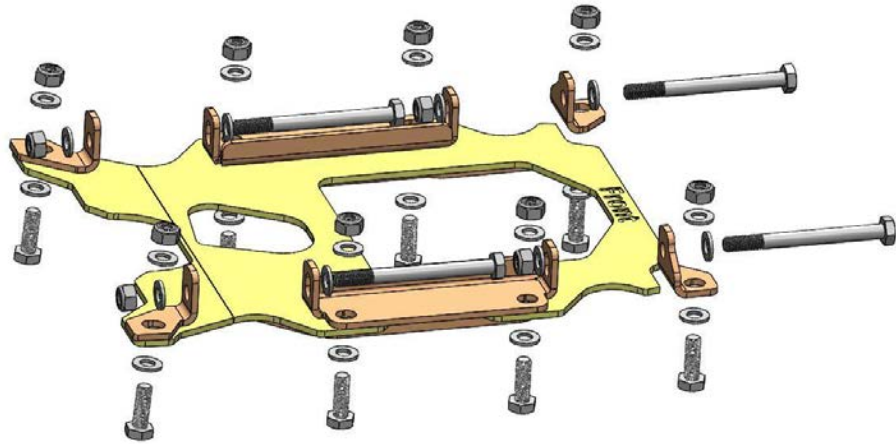
11. Using the 10mm x 35mm bolts, 10mm washers, and 10mm lock nuts, loosely secure the plate to the frame. Place a 10mm washer onto the 10mm x35mm bolt and insert it into the plate and frame.



12. On the top side of the frame rail, loosely connect the plate with a 10mm washer and 10mm lock nut. Repeat steps until all bolts are in place.



13. Once all bolts are in place, torque all bolts to 45lbft.



Thank You  
For Choosing  
**HIGHLIFTER**



### **High Lifter Lifetime Warranty**

From the beginning, High Lifter has engineered and manufactured some of the toughest, most durable products on the market. That is why this product comes with a Lifetime Warranty. It is our promise that High Lifter will never let you down.

- The **Lifetime Warranty** covers products sold to the original purchaser only and is not transferable. The term of the warranty is for the lifetime of the vehicle in question.
- Normal wear and tear items and finishes, such as, but not limited to Heim joints, tie rod ends, ball joints, bearings, seals, bushings, bushing sleeves, zinc plating, powder coating, or chipping and discoloration of any finish is not covered.
- High Lifter will ship the replacement product after the returned product has been inspected by High Lifter staff.
- The warranty shall not include claims for damages, installation time or labor charges, economic losses, inconvenience, transportation, towing, down time, direct or indirect or consequential damages or delay resulting from any defect.
- The warranty does not apply to products that have been improperly applied or improperly installed.
- **SPECIAL NOTE:** The warranty for this product will not cover improper installation of ball joints. Any claim relating to a ball joint issue will require inspection before eligibility for warranty can be determined. If the ball joint area shows damage due to improper installation such as, ridges, scarring, impact marks or other signs of improper installation, the warranty will be not be approved.

### **Making a warranty claim**

1. All claims must be accompanied by the part and the original sales receipt or other acceptable proof of purchase from the original owner.
2. All warranties must be accompanied with a Return Merchandise Authorization (RMA) number. (Contact High Lifter at 318-524-2270 or 800-699-0947 for an RMA number)
3. When shipping the damaged product:
  - a. Write the RMA number on the outside of the box.
  - b. Also include the RMA number, proof of purchase and any notes inside the box.
  - c. Please keep your tracking number and shipment information.
4. The customer is responsible for shipping the product to High Lifter--return shipping within the lower 48 states will be paid by High Lifter products. With all warranty claims, only standard shipping services apply.
5. High Lifter will process your order within 24 business hours of receiving the returned item.
6. **Ship to:** High Lifter Products. 7455 Atkinson Drive. Shreveport, LA 71129