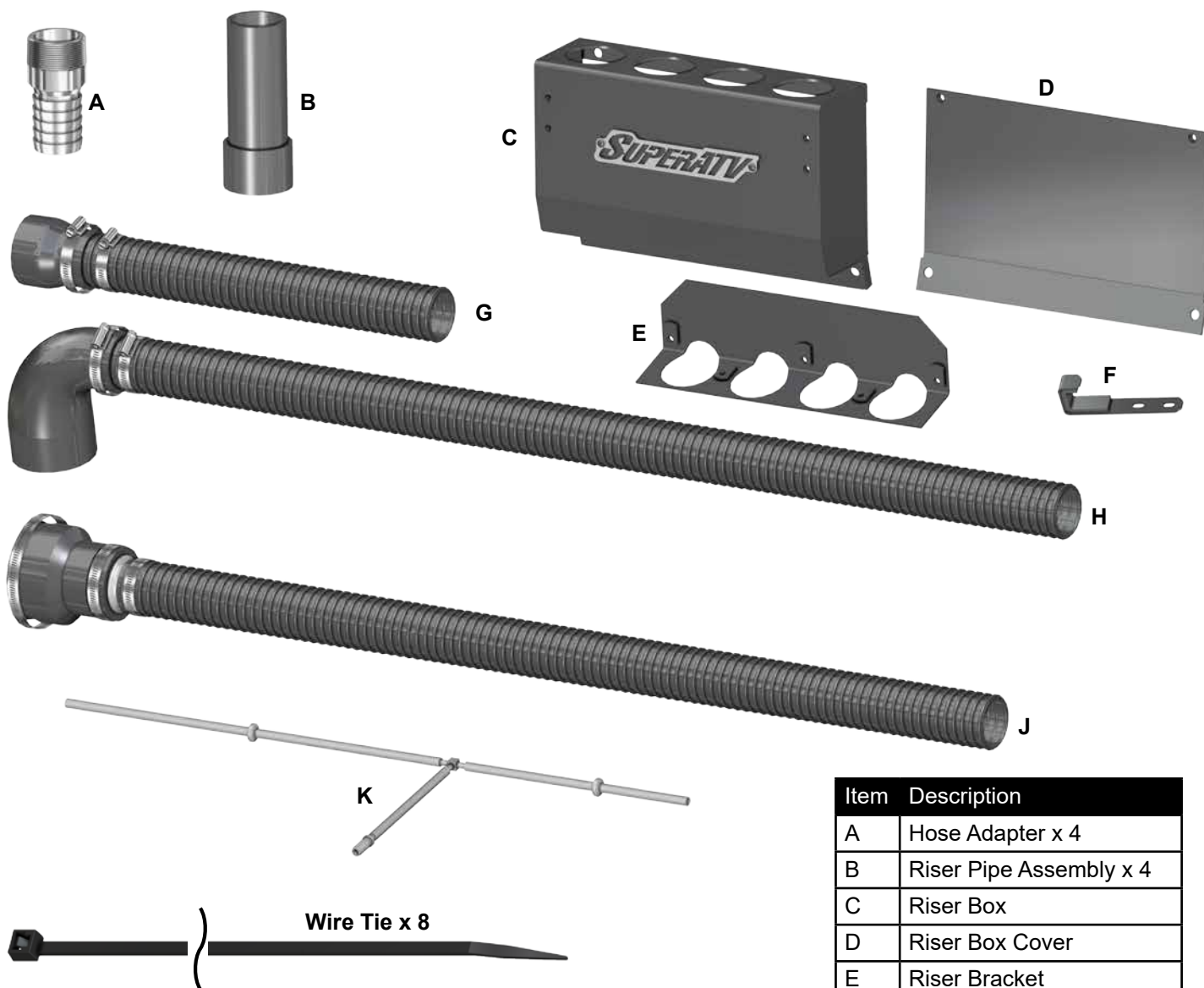


INSTALLATION INSTRUCTIONS

Snorkel Kit: for multiple Polaris® General™ models



Item	Description
A	Hose Adapter x 4
B	Riser Pipe Assembly x 4
C	Riser Box
D	Riser Box Cover
E	Riser Bracket
F	Riser Box Clamp x 2
G	Air Box Snorkel
H	Belt Exhaust Snorkel
J	Belt Intake Snorkel x 2
K	Gas Tank Vent Hose

(Kit Contents continue on following page)

- Clutch Puller, not included, will be needed.
- SuperATV recommends removing Bellows before extended amounts of high speed riding.
- Do not discard packaging until product has been successfully installed.

Need help with your installation?



sales@superatv.com



www.superatv.com



1-855-743-3427



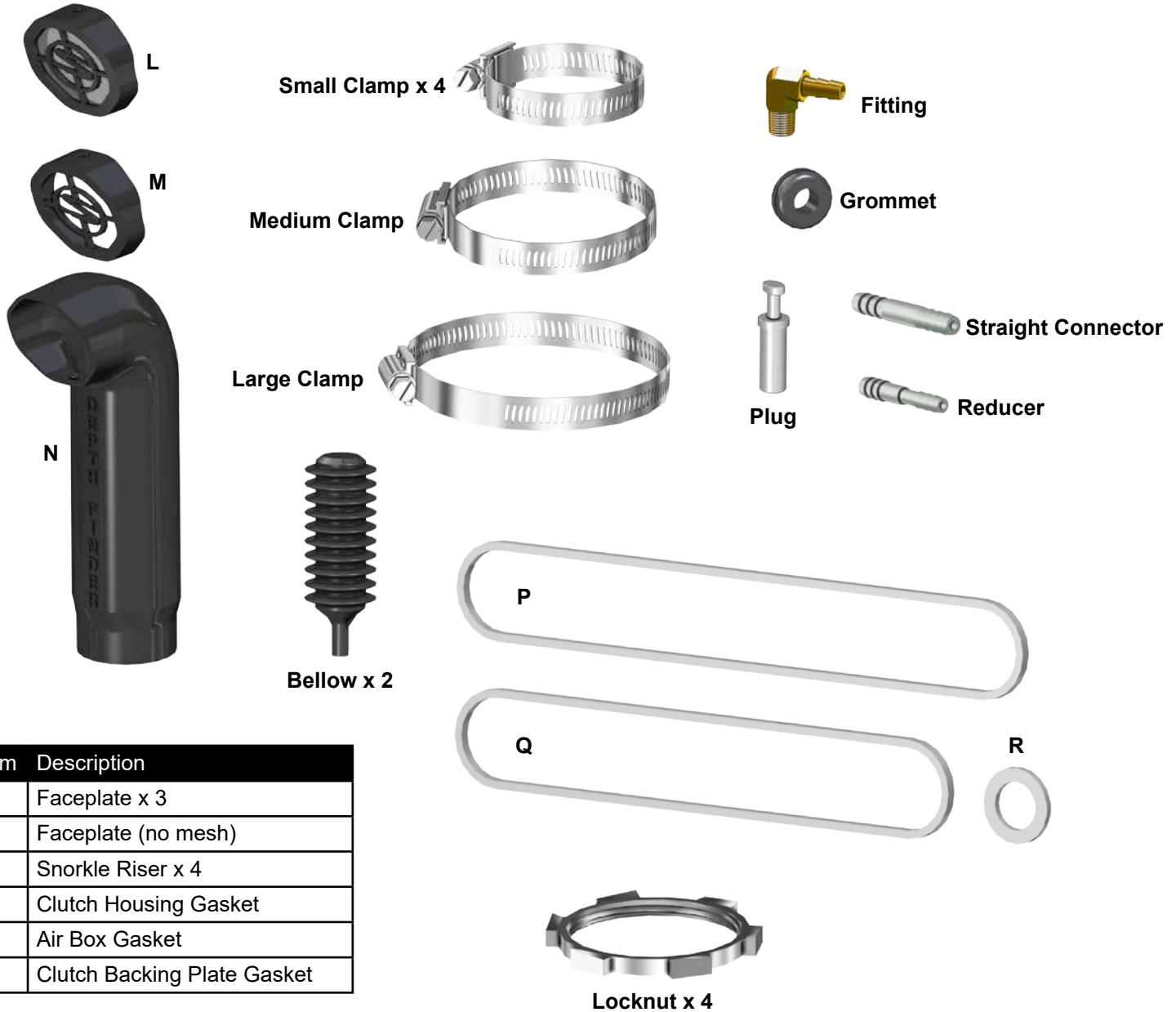
8:00am - 8:00pm EST M-Th
8:00am - 7:00pm EST Friday
9:00am - 2:00pm EST Saturday

Read instructions and view illustrations before beginning.

Thank You
For Choosing

SUPERATV.COM[®]

(Kit Contents continued)



Item	Description
L	Faceplate x 3
M	Faceplate (no mesh)
N	Snorkle Riser x 4
P	Clutch Housing Gasket
Q	Air Box Gasket
R	Clutch Backing Plate Gasket

Liability Statement

SuperATV's® products are designed to best fit user's ATV/UTV under stock conditions. Adding, modifying, or fabricating any factory or aftermarket parts will void any warranty provided by SuperATV® and is not recommended. SuperATV's® products could interfere with other aftermarket accessories. If user has aftermarket products on machine, contact SuperATV® to verify that they will work together.

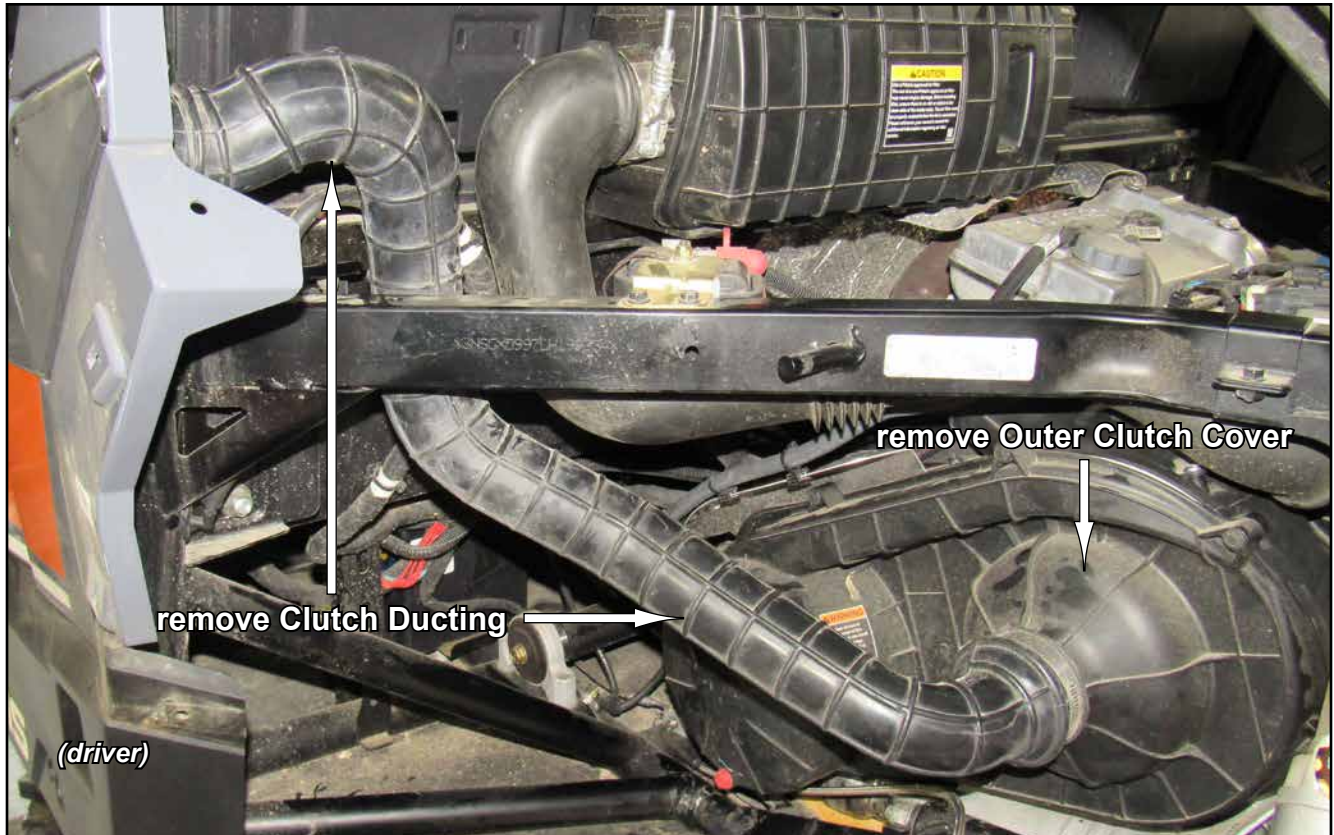
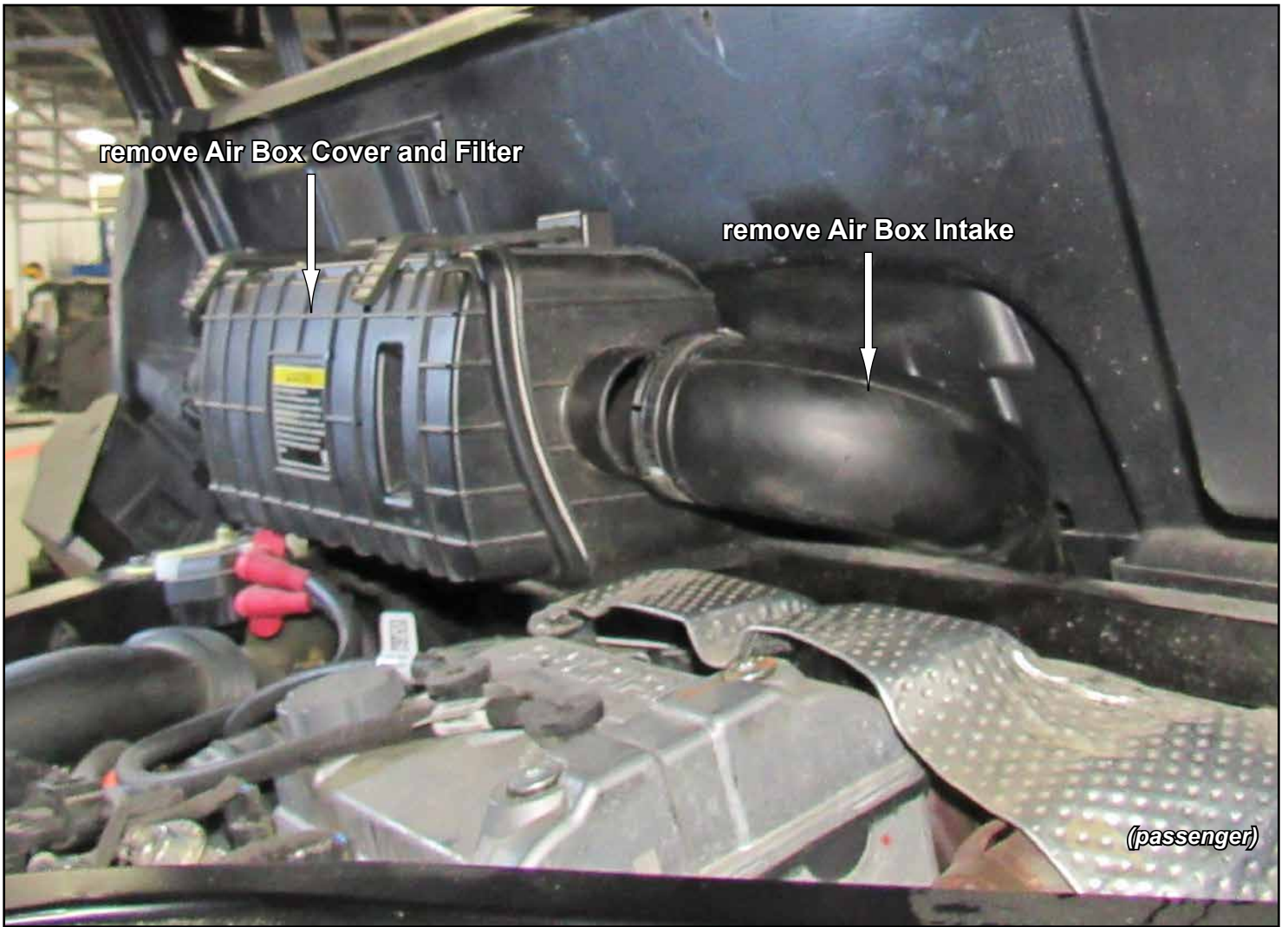
Although SuperATV® has thousands of satisfied customers, user should be aware that installing lift kits, long travel, or suspension kits, tires, etc. will change the ride of machine and may increase maintenance and part wear. Operating any off-road machine while, or after, consuming alcohol and/or drugs increases risk of bodily harm or death. No warranty or representation is made as to this product's ability to protect user from severe injury or death. SuperATV® urges operators and occupants to wear a helmet and appropriate riding gear at all times.

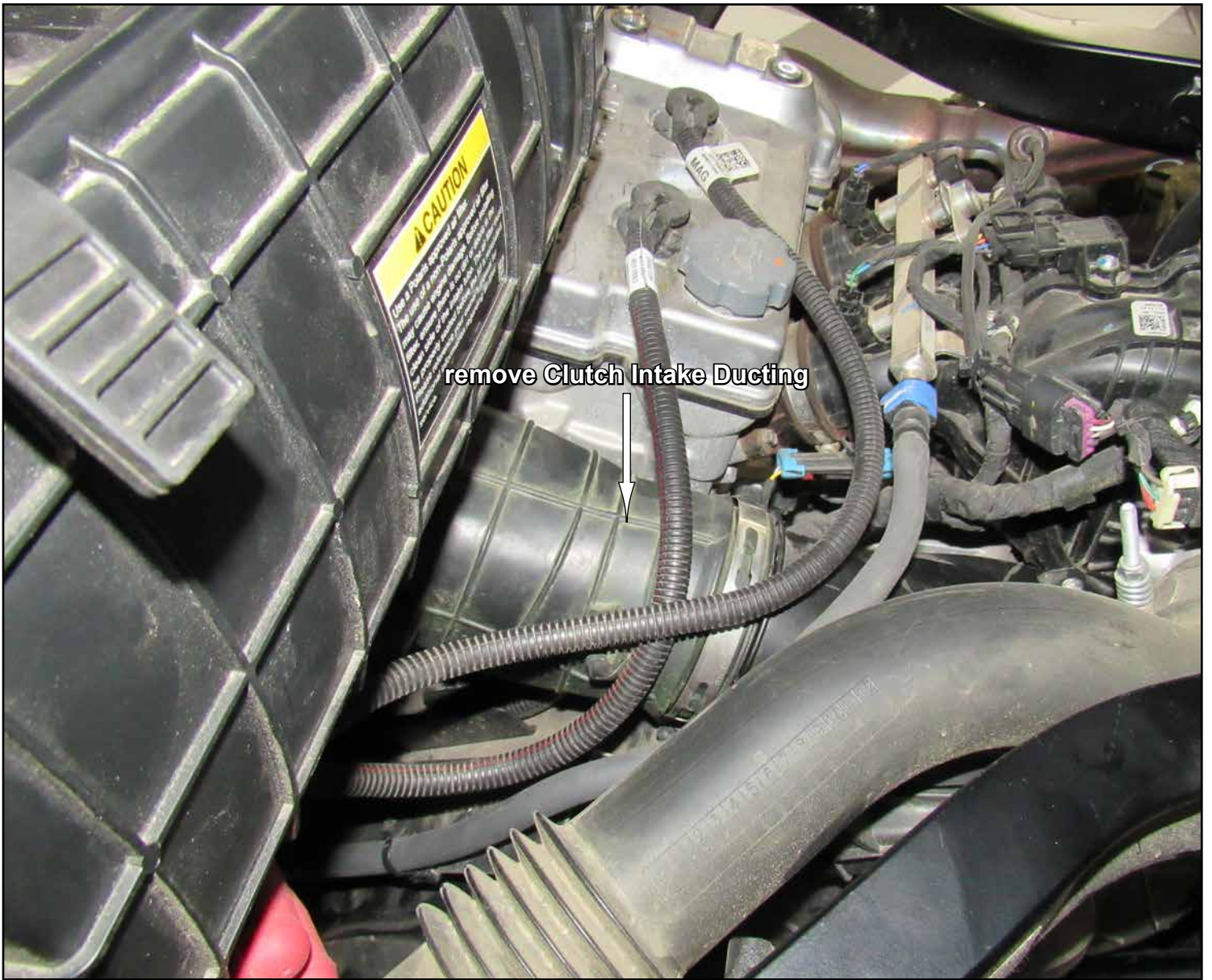
By purchasing and installing SuperATV® products, user agrees that should damages occur, SuperATV® will not be held responsible for loss of time, use, labor fees, replacement parts, or freight charges. SuperATV®, nor any 3rd party, will not be held responsible for any direct, indirect, incidental, special, or consequential damages that result from any product purchased from SuperATV®. The total liability of seller to user for all damages, losses, and causes of action, if any, shall not exceed the total purchase price paid for the product that gave rise to the claim.

SuperATV® will warranty only parts provided by SuperATV®. Any damage or problems with OEM housings, bearings, seals, or other manufacturers' products will not be covered by SuperATV®. SuperATV® parts and products are not warrantied if item was not installed properly, misused, or modified.

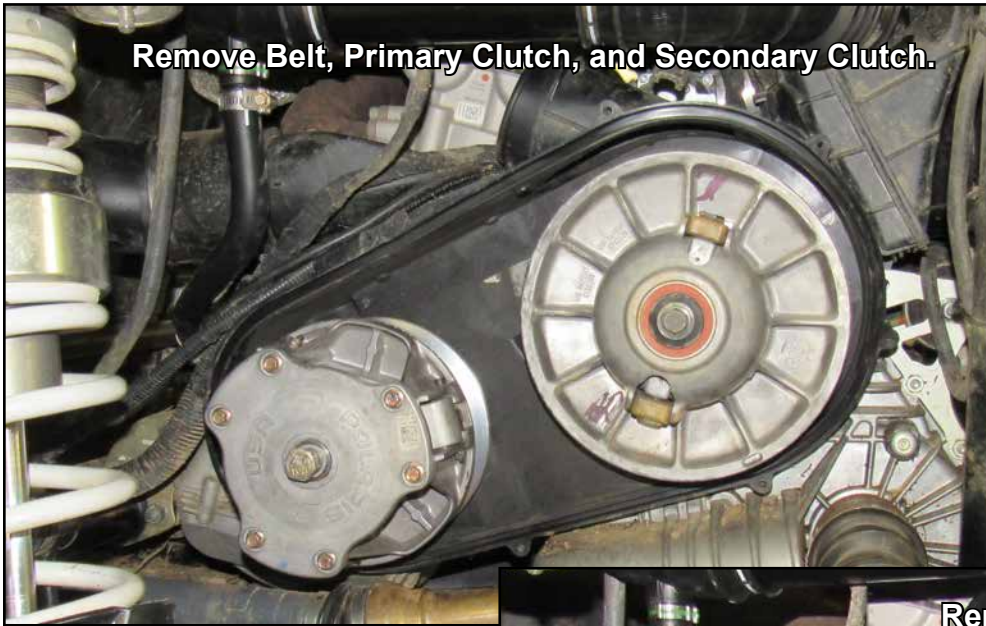
Installing, adding, modifying, or fabricating any factory or aftermarket product to your ATV/UTV may violate certain local, state, and federal laws. Be advised that laws vary depending on town, city, county, state, etc. Use of certain products on public streets, roads, or highways may be in violation law. The Buyer is solely and exclusively legally and personally responsible for any violation of the law by the installation or use of the product. You must abide by all local, state, and federal laws, including but not limited to vehicle safety, traffic laws, and ordinances. It is your responsibility to know the laws and how they apply to you.

The Buyer is responsible to fully understand the capability and limitations of his/her vehicle according to manufacturer specifications, warnings and instructions and agrees to hold SuperATV® harmless from any damage resulting from failure to adhere to such specifications, warnings and/ or instructions. The Buyer is also responsible to obey all applicable federal, state, and local laws and ordinances when operating his/her vehicle while using this product, and the Buyer agrees to hold SuperATV® harmless from any violation thereof.





Remove Belt, Primary Clutch, and Secondary Clutch.



Remove Inner Clutch Cover.

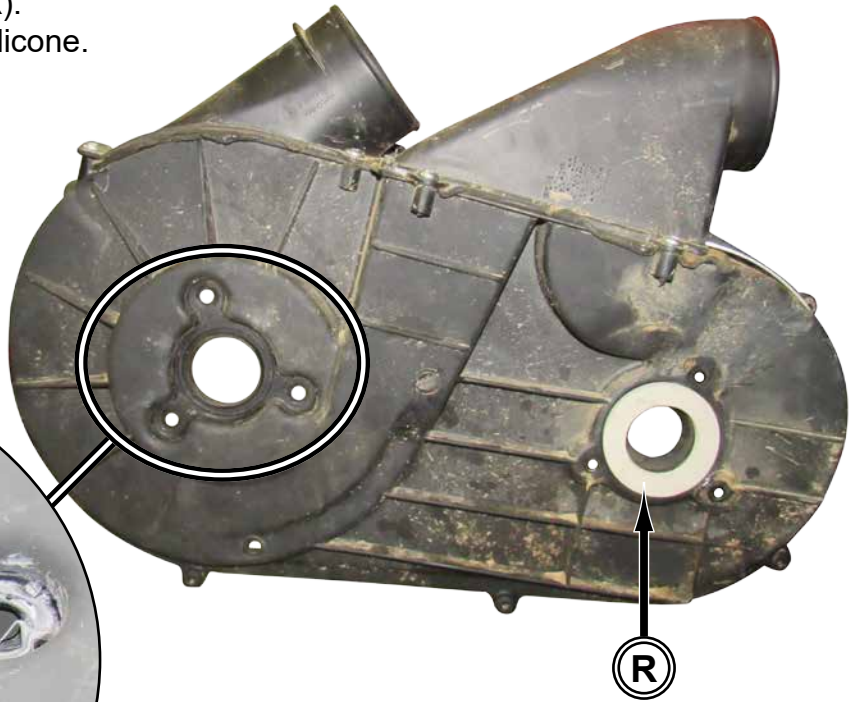


- Remove Ducts.
- Apply RTV 100% Silicone.
- Reinstall Ducts.



- Install Clutch Backing Plate Gasket (R).
- Coat with a thin layer of RTV 100% Silicone.

Apply RTV 100% Silicone
in area shown.



- Replace stock Clutch Cover Gasket with Clutch Housing Gasket (P).
- Reinstall all Clutch components to machine.

- Replace stock Gasket with Air Box Gasket (Q).



- Replace stock Drain Plug with components shown.

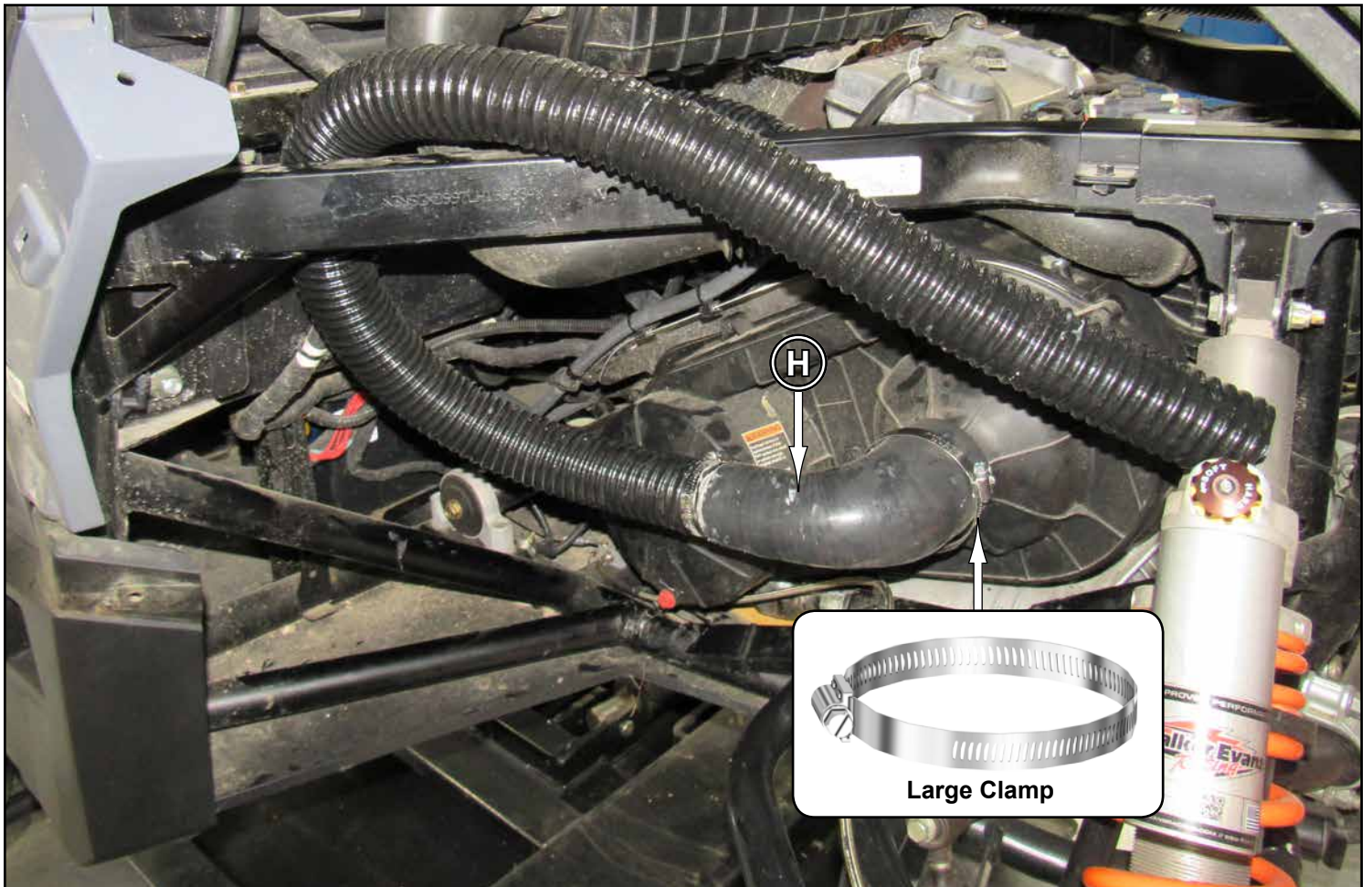


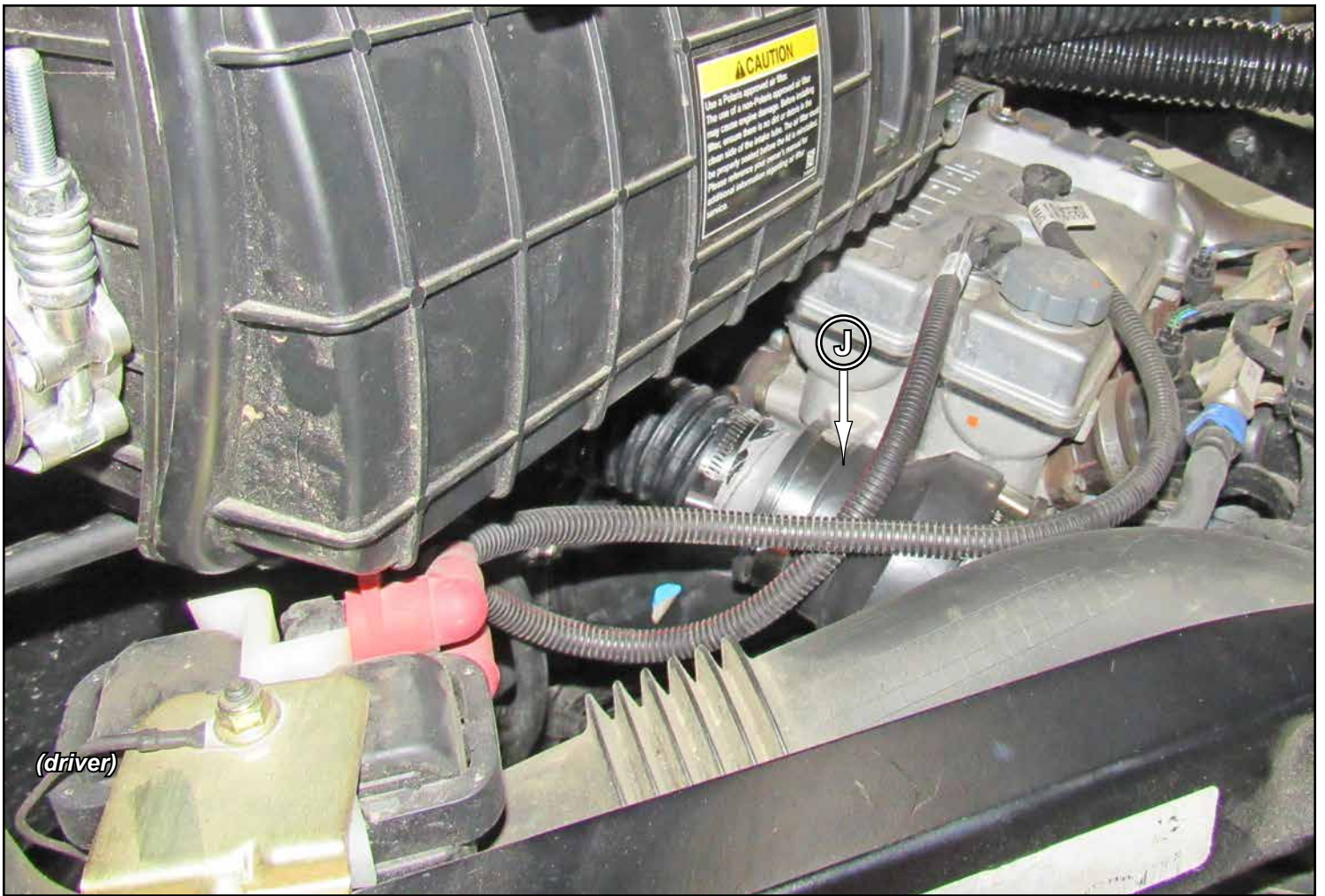
- Reinstall Filter and Air Box Cover.

Before installing, apply black RTV 100% Silicone to insides of Snorkel Fittings.



- Install Belt Exhaust Snorkel (H) to Clutch Housing. Secure with Large Clamp; tighten.



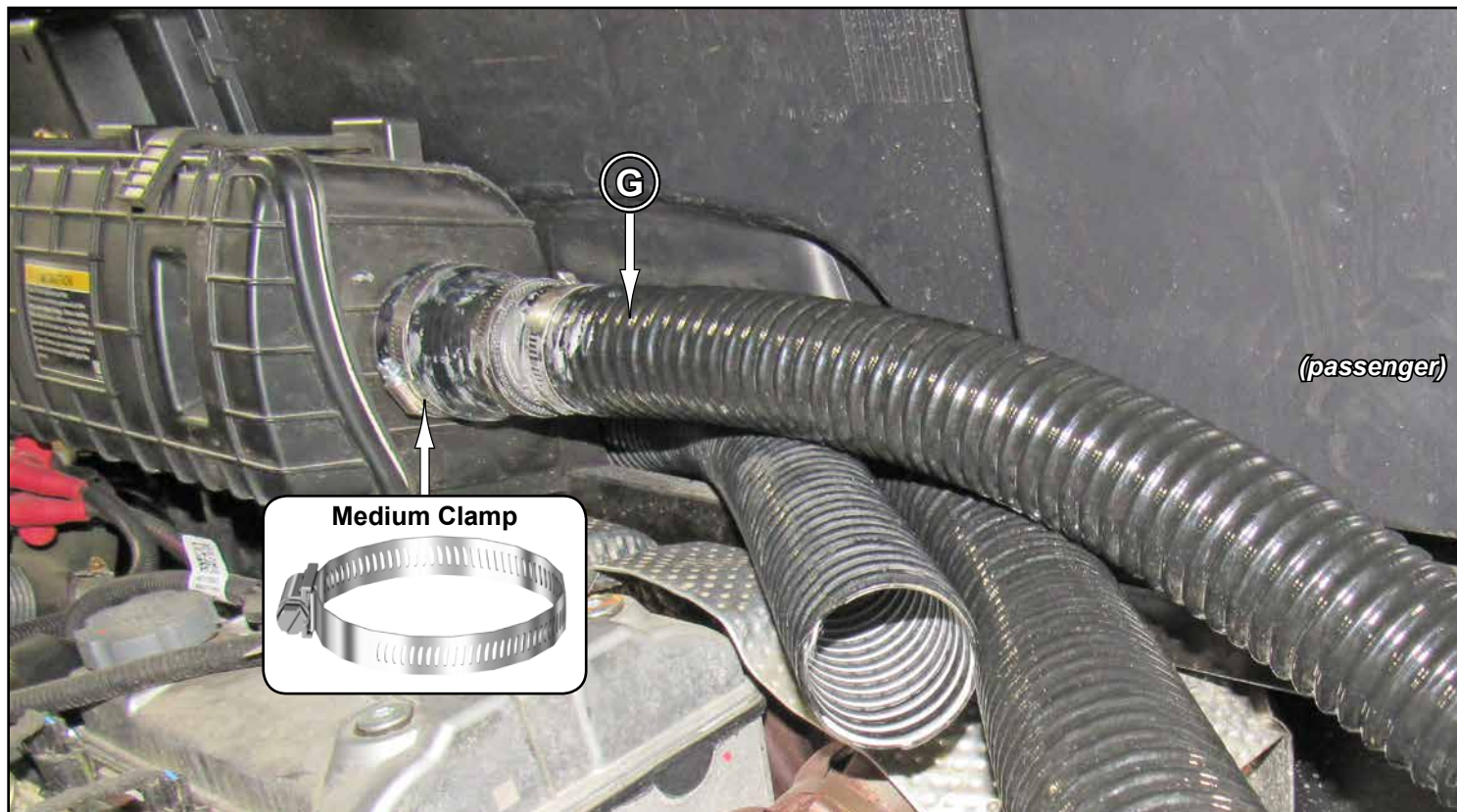


- Install Belt Intake Snorkels (J) to Clutch Housing; tighten Clamps.

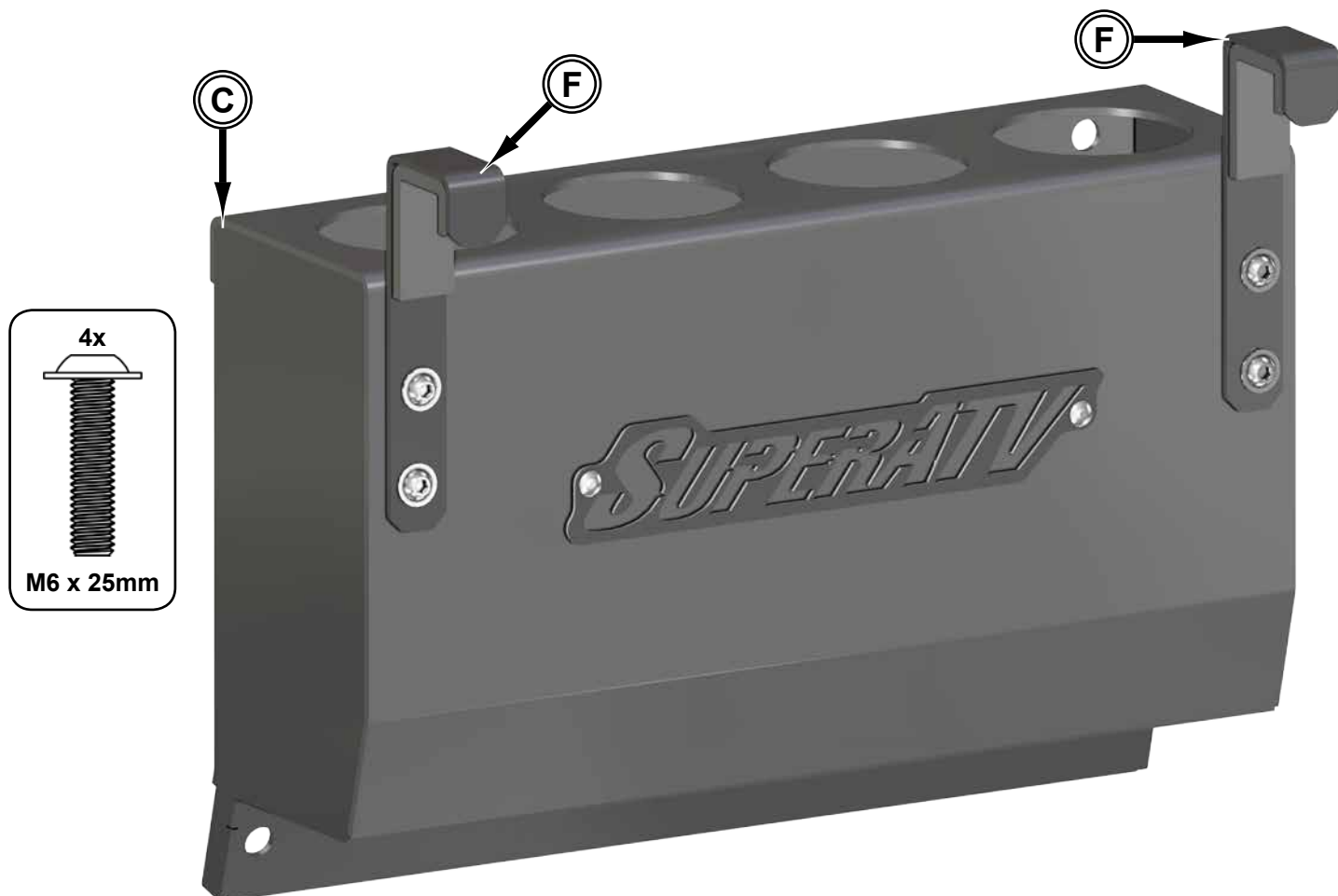


IN-SKL-P-GEN Route Belt Intake Snorkels (J) up and behind Air Box.

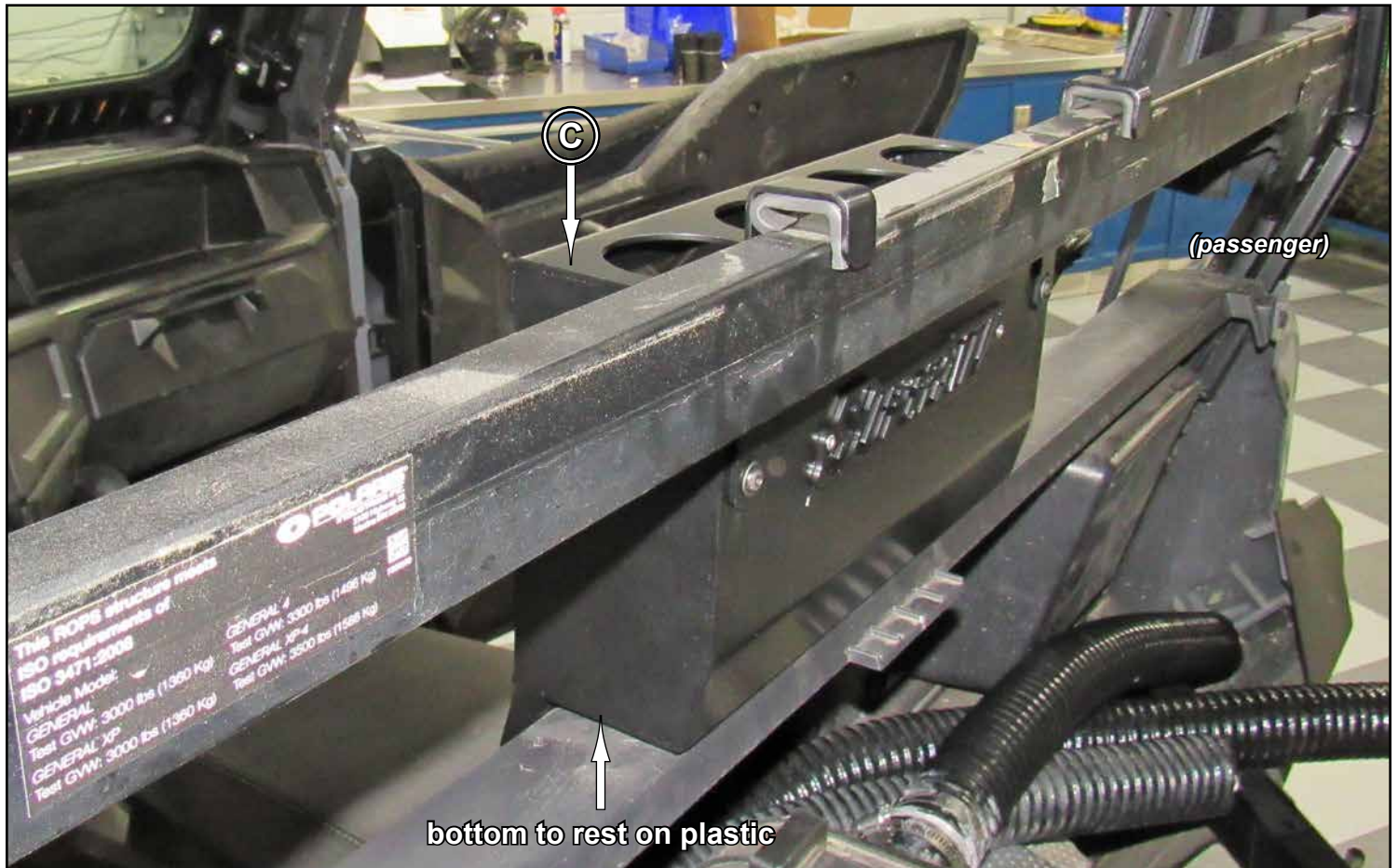
- Install Airbox Snorkel (G) to Air Box. Secure with Medium Clamp; tighten.



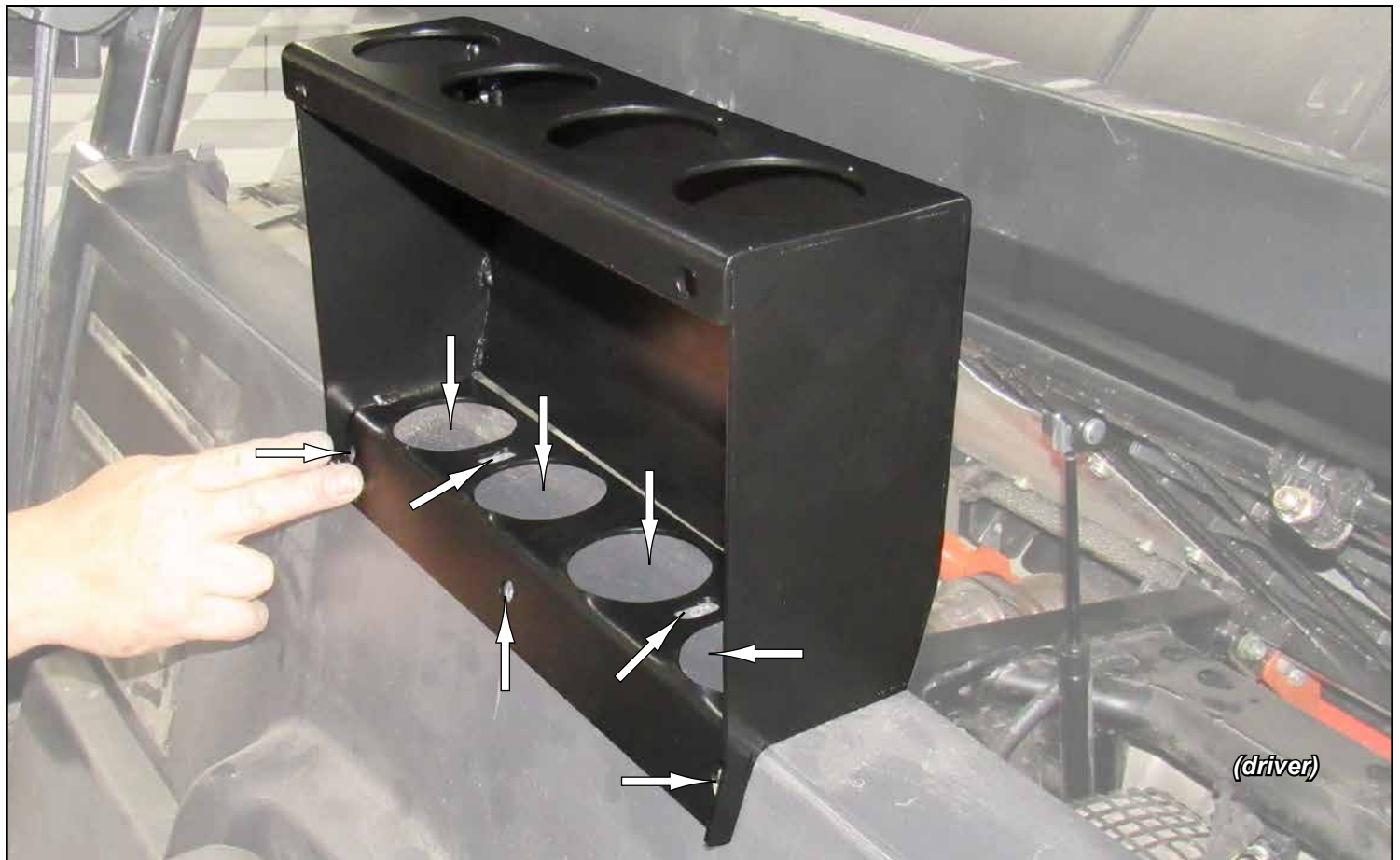
- Install Riser Box Clamps (F) to Riser Box (C) with hardware shown; do not tighten.



- Place Riser Box assembly onto Cage and center as shown.



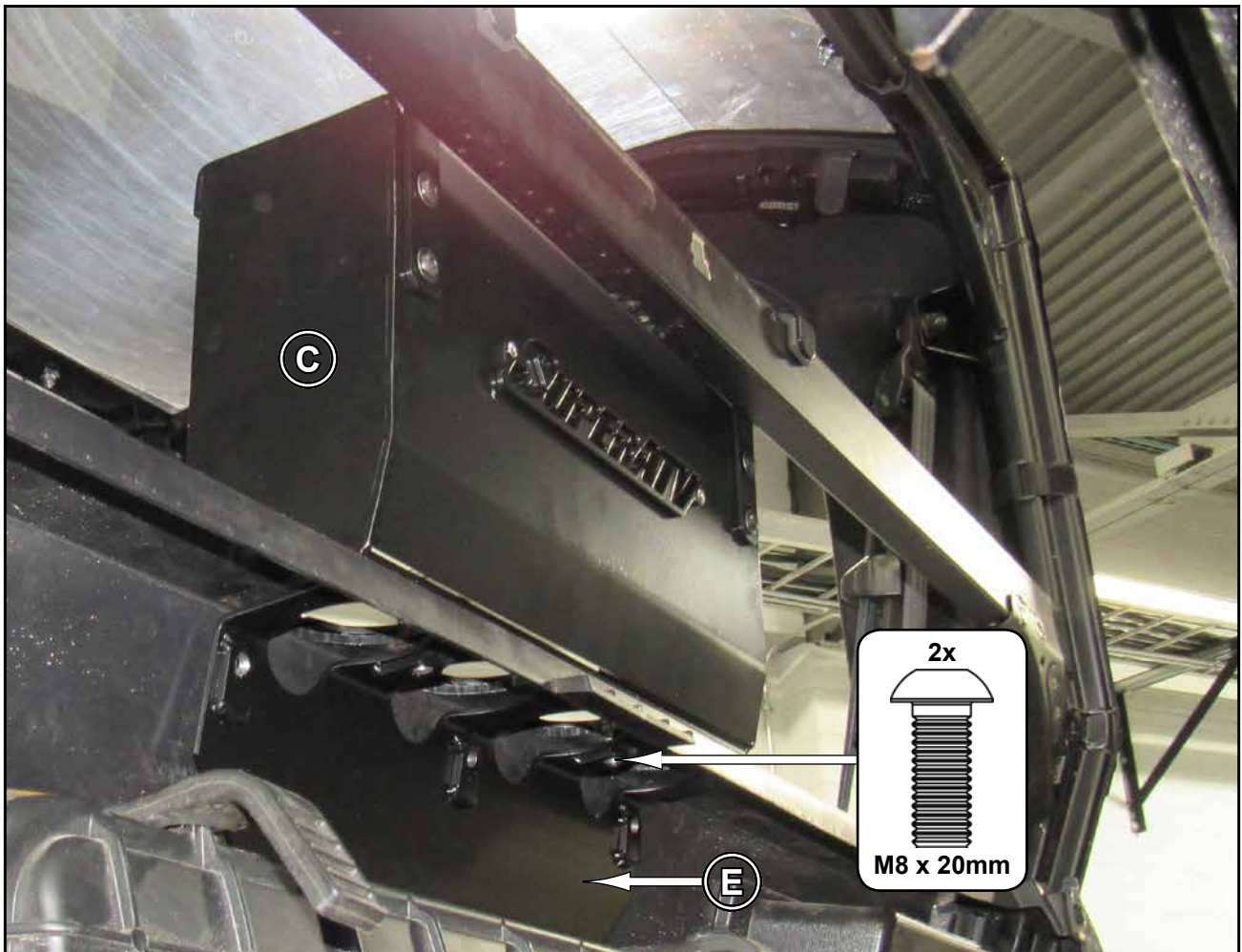
- Mark hole locations shown onto plastic.



- Remove Riser Box assembly and drill holes.



- Reinstall Riser Box assembly; tighten Riser Box Clamps (F) hardware.
- Install Riser Bracket (E) and secure to Riser Box (C) with hardware shown; do not tighten.

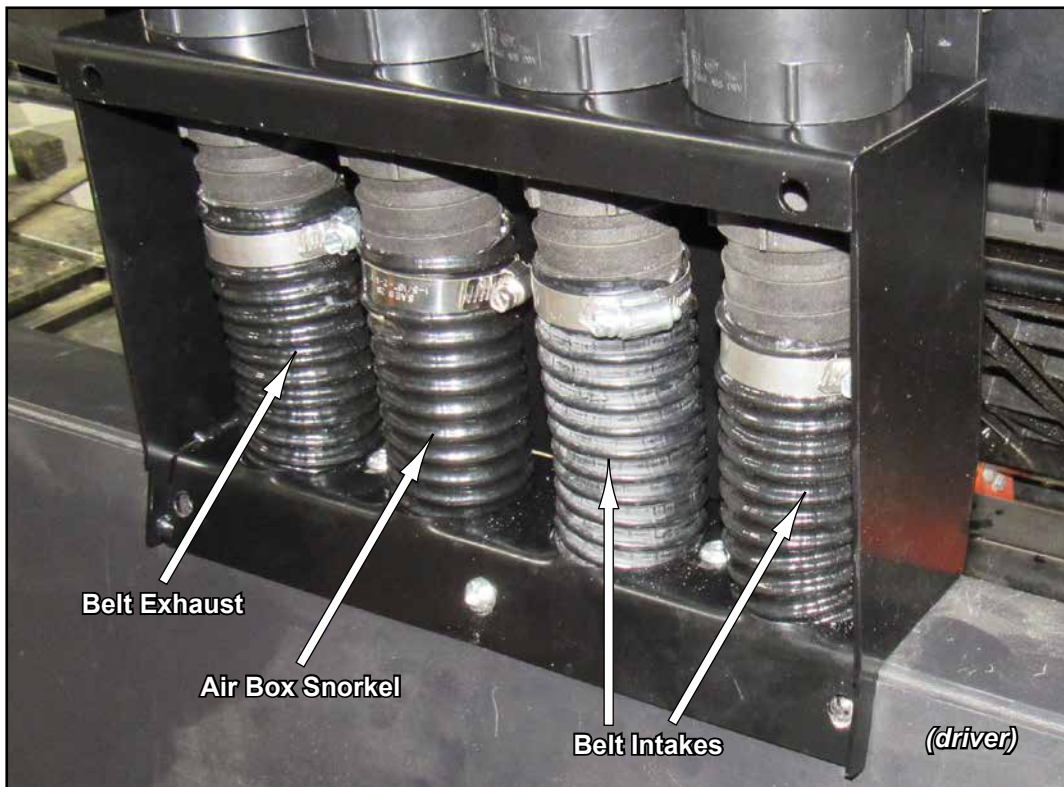


- Secure Riser Bracket (E) to Riser Box (C) with hardware shown; tighten all hardware.

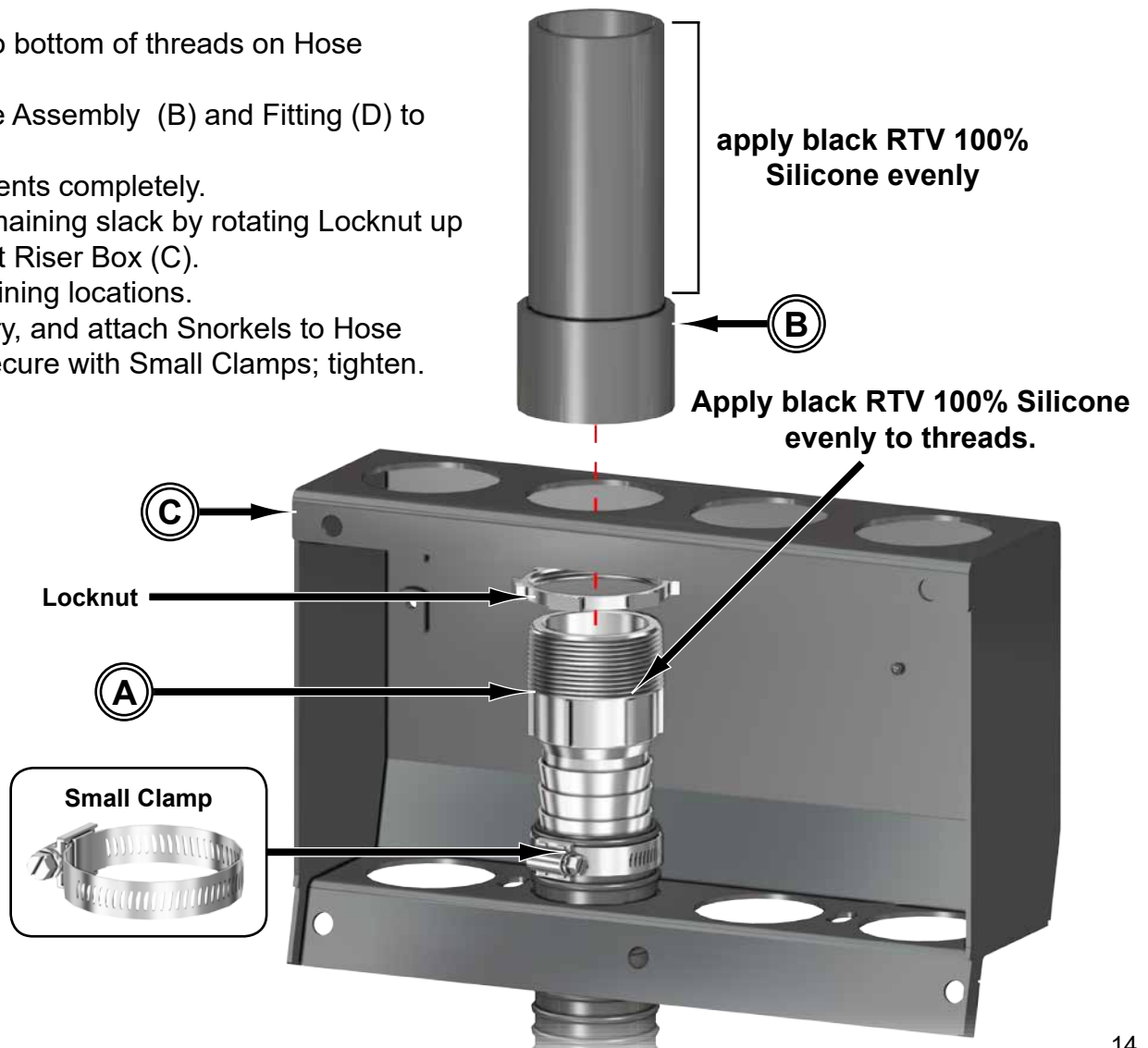


- Insert Snorkels through Riser Bracket (E), plastic, and Riser Box (C).

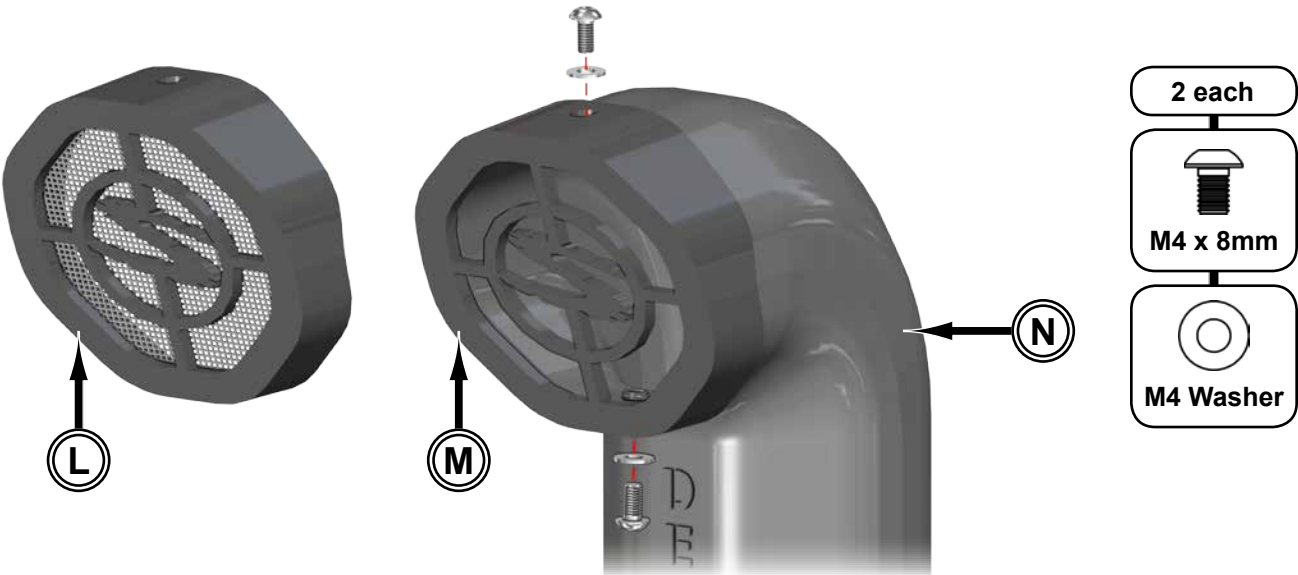




- Install Locknut to bottom of threads on Hose Adapter (A).
- Install Riser Pipe Assembly (B) and Fitting (D) to Riser Box (C).
- Tighten components completely.
- Remove any remaining slack by rotating Locknut up until tight against Riser Box (C).
- Repeat for remaining locations.
- Trim, if necessary, and attach Snorkels to Hose Adapters (A). Secure with Small Clamps; tighten.



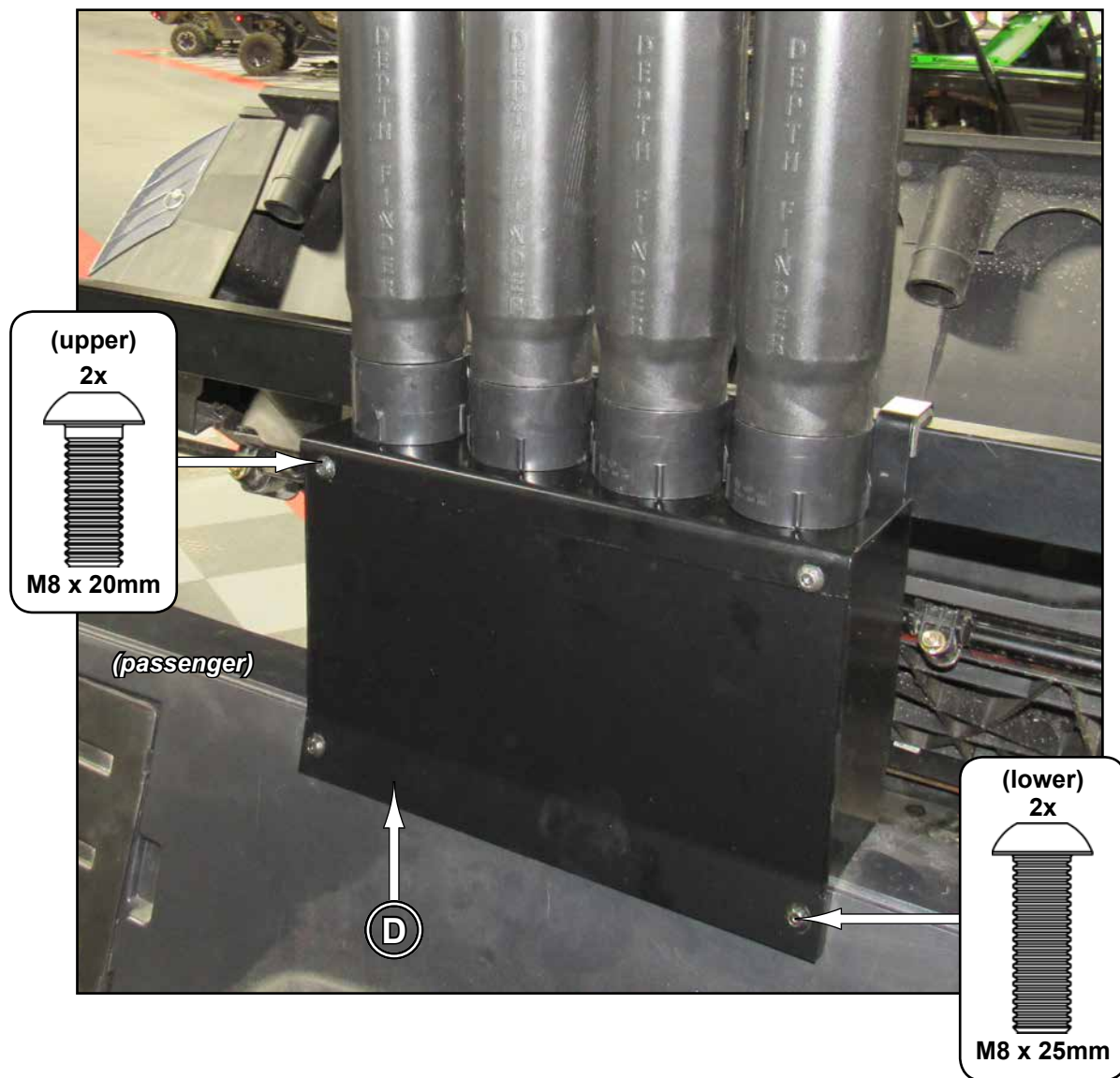
- Install Faceplates (L)(M) to Snorkel Risers (N) with hardware shown; tighten.



- Install Snorkel Risers (N) onto Riser Pipe Assemblies (B).



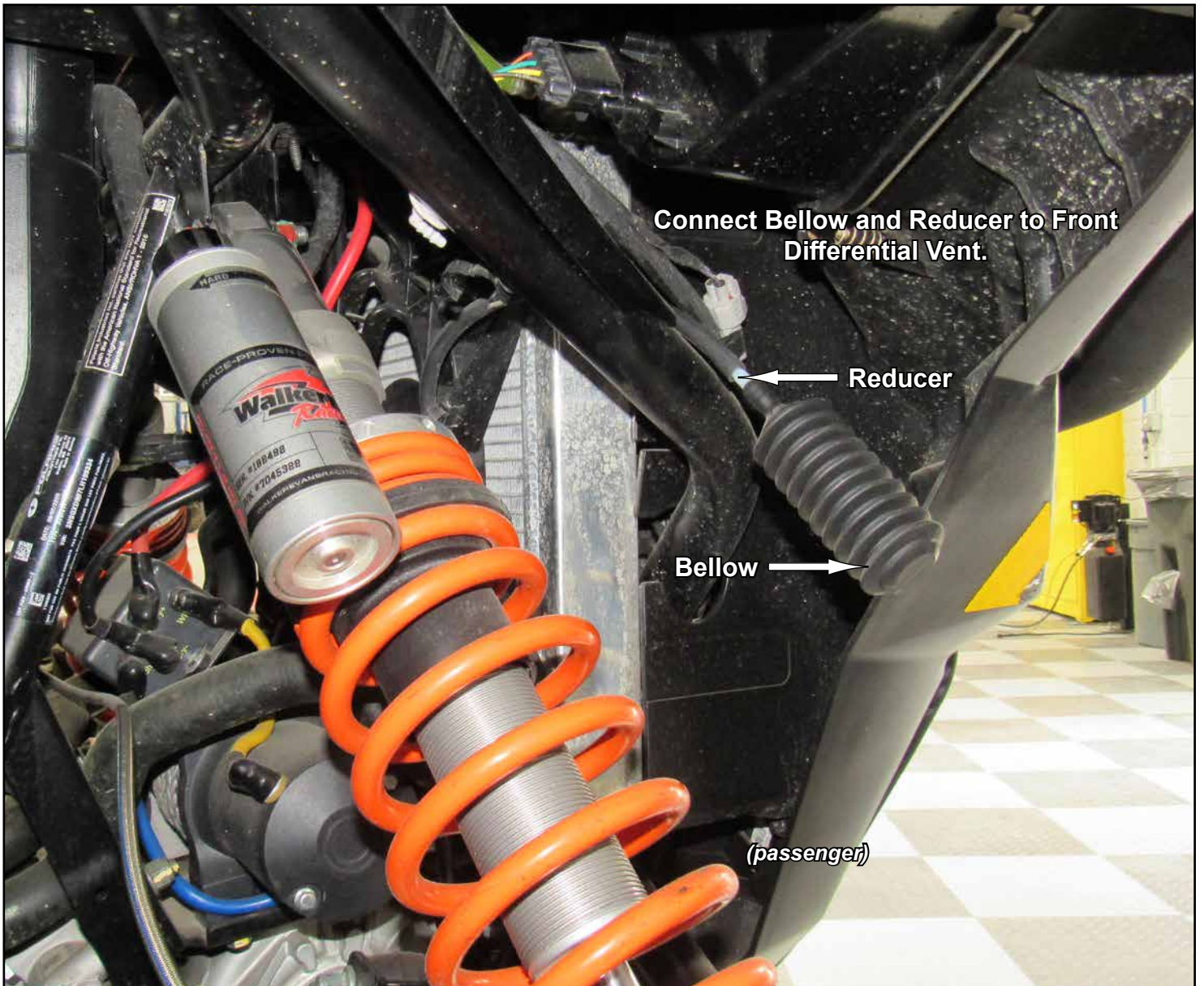
- Install Cover (D) with hardware shown; tighten.



- Drill a Ø3/8" hole into Air Box.
- Install Fitting and surround with black RTV 100% Silicone.

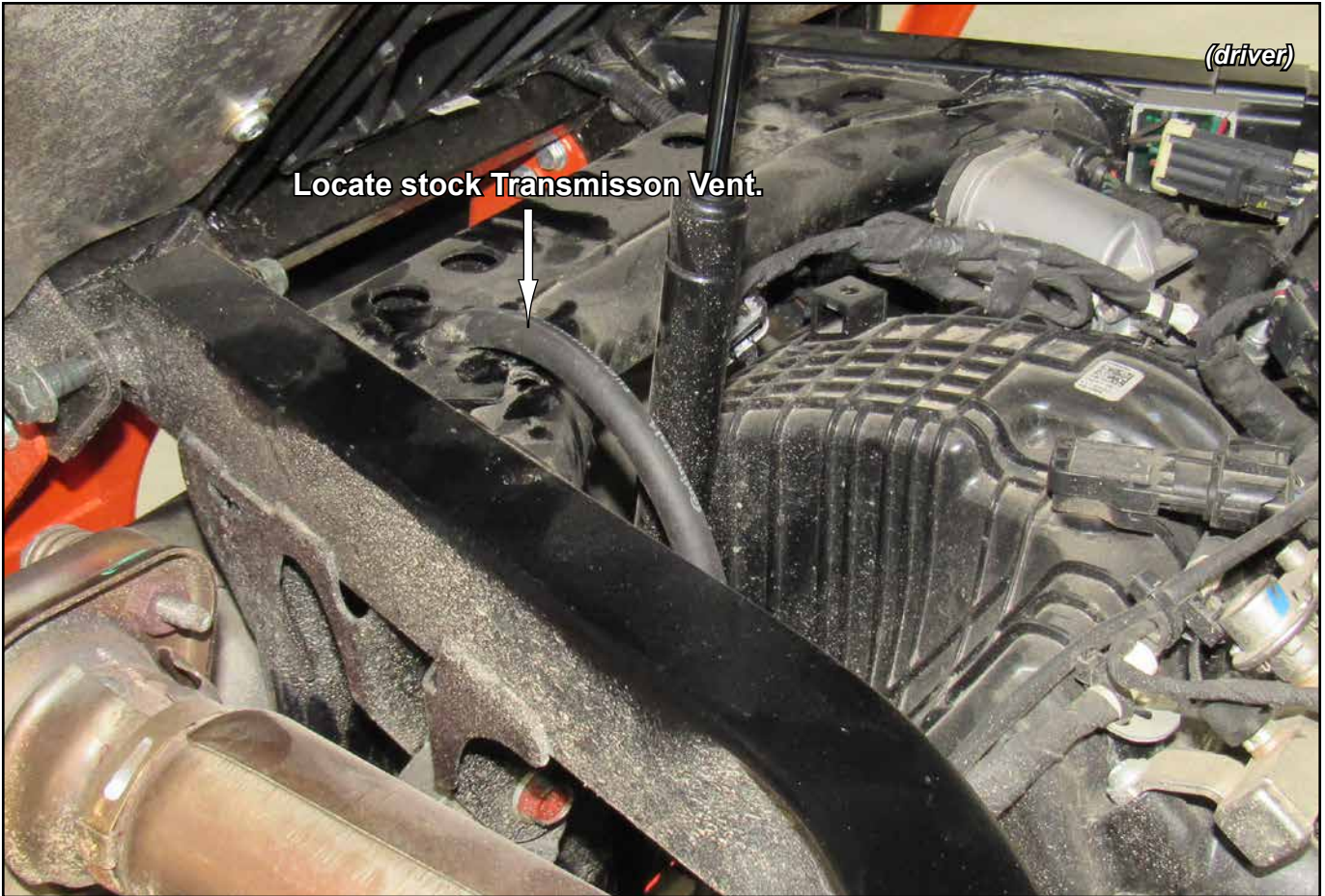


- Disconnect stock Fuel Vent Line.
- Connect Gas Tank Vent Hose (K) to Fitting and stock Fuel Vent Line.



(driver)

Locate stock Transmission Vent.



Connect Bellow and Straight Connector
to Front Differential Vent

Straight Connector

Bellow

(driver)

